

### Types of acceleration

uniform acceleration

Non-uniform acceleration

\* Uniform acceleration  $\frac{a}{t}$  if velocity increase at constant rate then the acceleration is called uniform acceleration.

\* Non-uniform acceleration  $\frac{a}{t}$  if velocity changes at non-uniform rate then the acceleration is called non-uniform acceleration.

### Graphical Representation

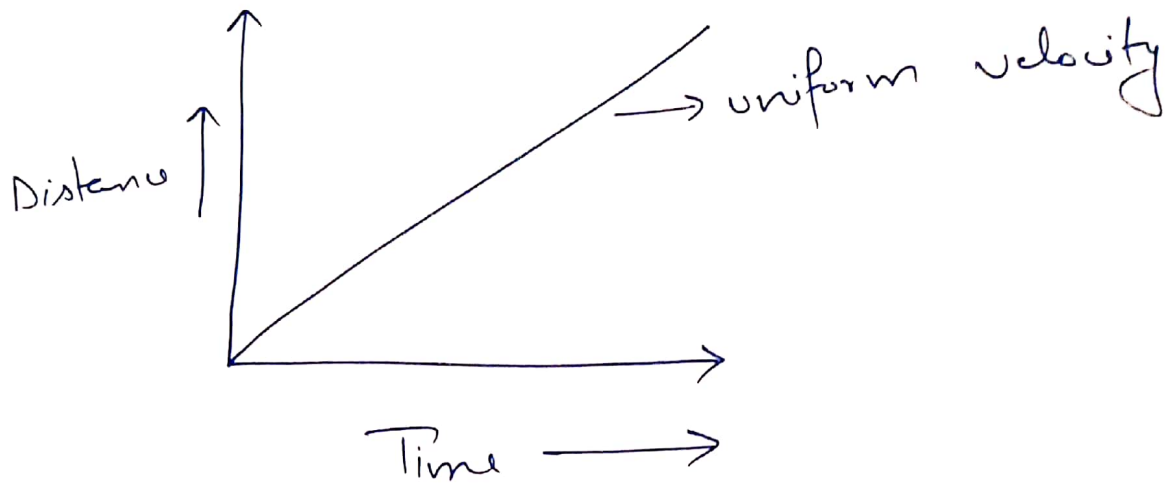
Distance-time graph

Velocity-time graph

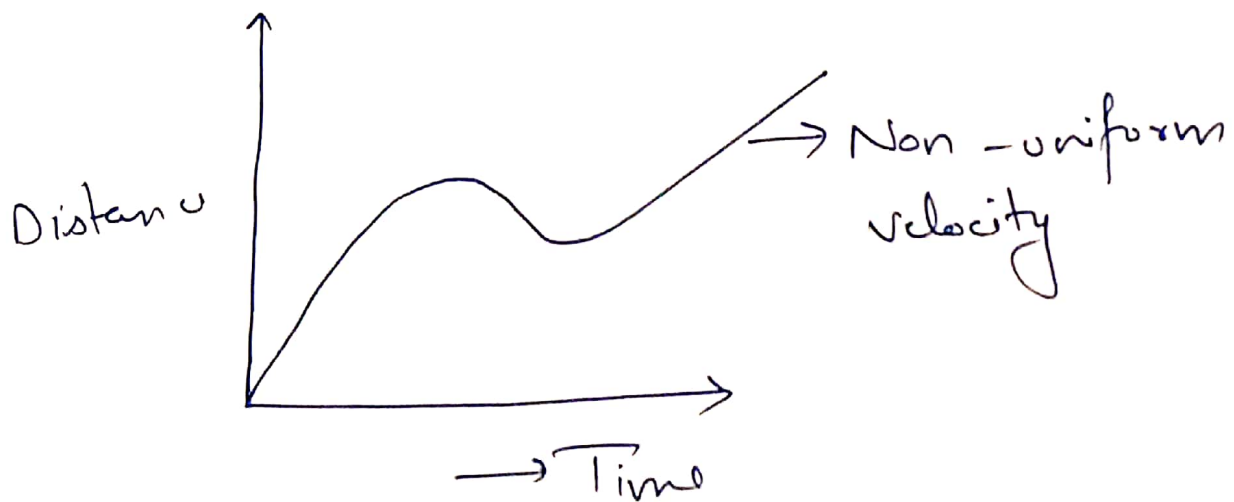
↓  
calculate speed by mean of distance and time

↓  
calculate distance by the mean of velocity and time

\* Distance-time graph  $\Rightarrow$  When object move with constant velocity (cover equal distances in equal interval of time).



(ii) When object moves covers unequal distance in equal interval of time.



Write in your fair notebook

Rajeev